



# Nornour

Mount Flagon, St Mary's,

TR21 0NE



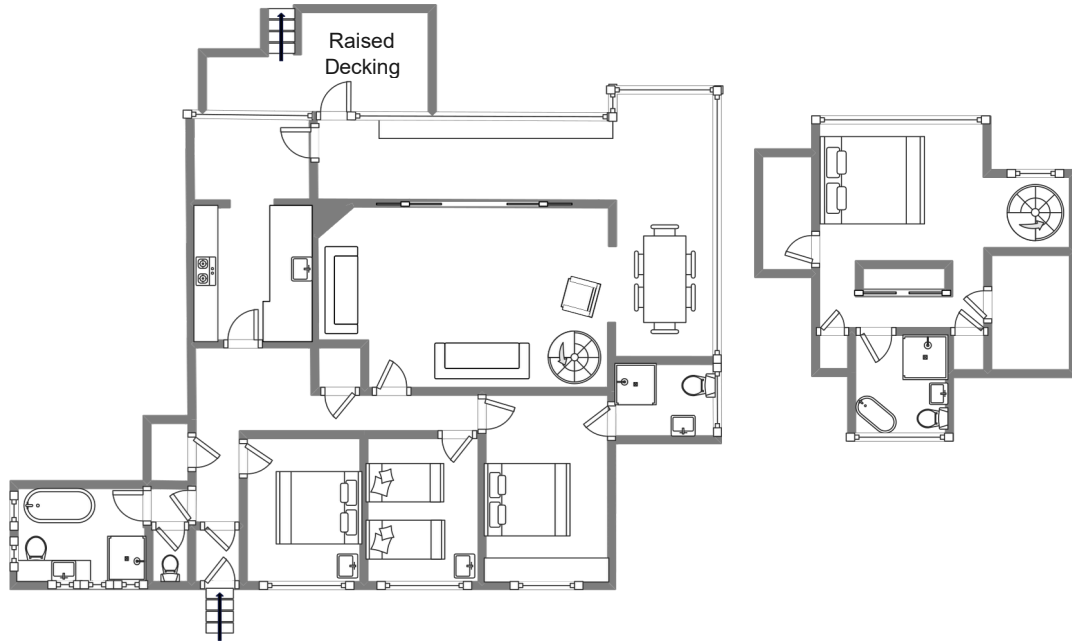
## Sleeps 8 | Wednesday Change over

- Double and twin arrangements
- Convenient location for beaches
- Sea Views
- Outside seating area
- Internet access
- Children and pets welcome

Nornour enjoys stunning sea views across the harbour towards Samson, Bryher and Tresco, and is a short walk to Porthmellon beach and the Gig sheds along the coastal path which then takes you in to Hugh town. It is an exceptional 4-bedroom property, two with ensuite bathrooms, a separate family bathroom and toilet. Set up as three double rooms and one twin it is ideal for large family groups who enjoy a bit of luxury on their holidays.

The accommodation is approached by a flight of steps and is spread over first and second floors with extensive living and dining areas to relax and enjoy the views over the private terrace, shared gardens and beyond. Please note that no BBQ's are allowed on the premises or grounds.

# Layout



## Getting to the property

### Map of St Marys



### Directions from the Quay | Walking time: 15-20 minutes

Head towards the entrance to the quay Turn left at The Mermaid Inn on to Hugh Street Keep to the left side of the road Continue along Hugh Street to Bordeaux shop and continue on the main road alongise Town Beach.

Follow the main road past Porthmellon Beach, industrial estate, down the hill. Turn left at the bottom of the hill towards duck pond. Just before duck pond, turn left and in approximately 50y turn left toward Mount Flagon.

What3words:diplomat.unzipped.bumpy

Scilly Self Catering  
Lower Strand  
Isles of Scilly, TR21 0PS

Enquiries@scillyselfcatering.com  
01720 422082  
www.scillyselfcatering.com